

## Installation instructions for mounting plate for simple pole 130 or 150 cm

When assembling the charger, follow its operating instructions.

Tools required to mount the charger:

- Electric screwdriver
- 8 mm socket wrench for screwdriver with extension
- Phillips PH3 screwdriver bit
- 8 mm wrench

Set components for the Wallbox charger:

- Mounting plate - 1 pc.
- Self-tapping screw 5.5x19 - 8 pcs.
- Lock bolt M5x20 - 4 pcs.
- M5 flange nut - 4 pcs.
- M5 washer - 4 pcs.
- Self-locking nut M5 - 4 pcs.

Set components for the Lumina charger:

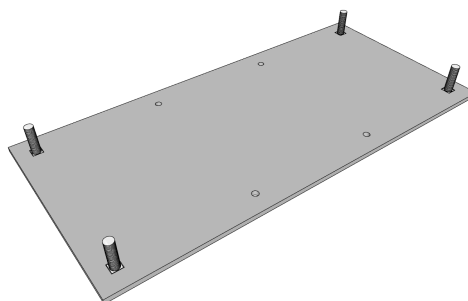
- Mounting plate - 1 pc.
- Self-tapping screw 5.5x25 - 6 pcs.
- Spacer sleeve - 6 pcs.
- Lock bolt M5x45 - 6 pcs.
- M5 flange nut - 6 pcs.
- M5 washer - 12 pcs.
- Self-locking nut M5 - 6 pcs.

Set components for the Stilo charger:

- Self-tapping screw 5.5x25 with countersunk head cross slot PH3 - 4 pcs.

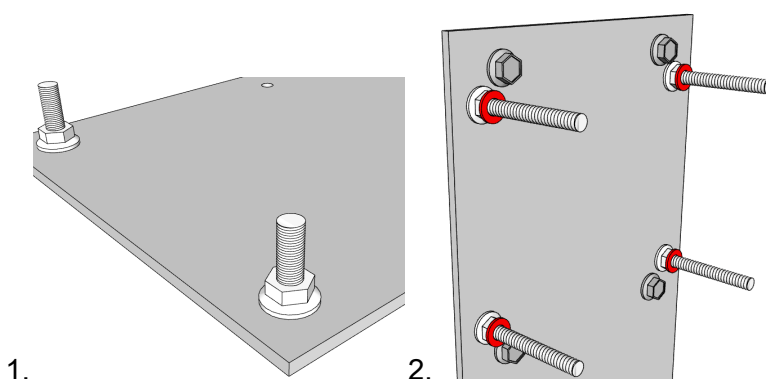
### Preparation of the mounting plate

Place the included lock screws in the square holes of the plate.



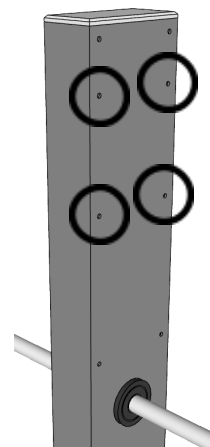
1. Thread the flange nuts onto all the lock bolts with your hands.  
Leave the screws loose so that they fit snugly into the mounting holes of the charger.

2. For the Lumina charger, put M5 washers on the flange nuts screwed onto the lock bolts.



## Wallbox

There are 8 mounting points visible on both sides of the pole on the paint surface. The picture opposite shows the mounting points for the Wallbox chargers.

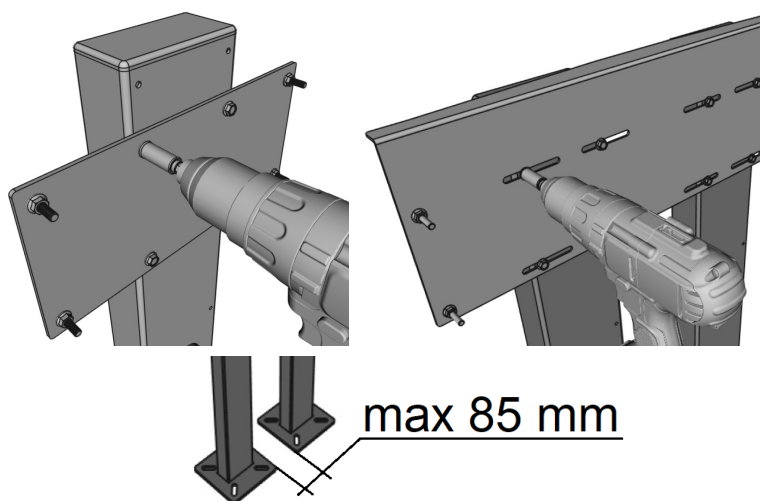


Screw the mounting plate to the pole with a screwdriver using the self-tapping screws included in the set.

Place the mounting plate for the Wallbox Duo Power on two poles.

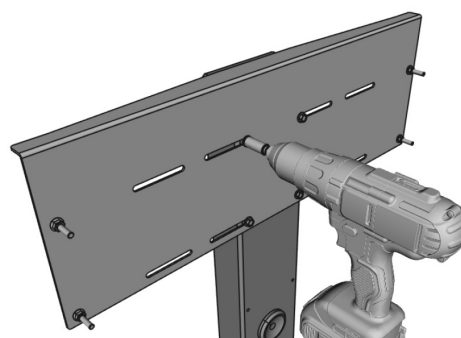
The elongated holes for self-tapping screws in the mounting plate for Wallbox Duo Power allow the plate at various distances between the poles.

Maximum distance between the pole bases is 85 mm.



### NOTE!

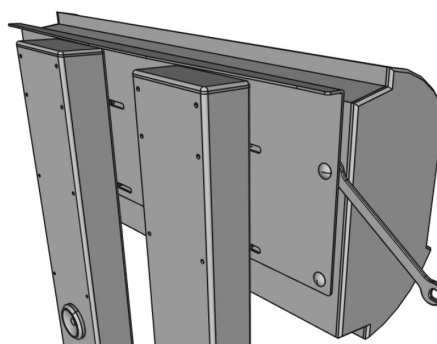
*For Wallbox Duo Power chargers intended for low-intensity use, it is permissible to mount the mounting plate on a single pole.*



Place the charger's dedicated mounting holes on the lock screws.

Tighten the flange nuts to the intermediate plate using an 8 mm wrench.

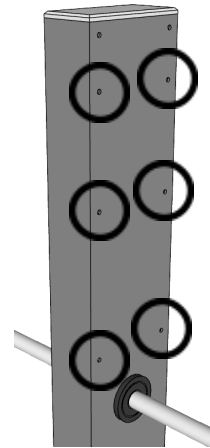
Fix the charger to the post using M5 washers and self-locking nuts.





## Lumina

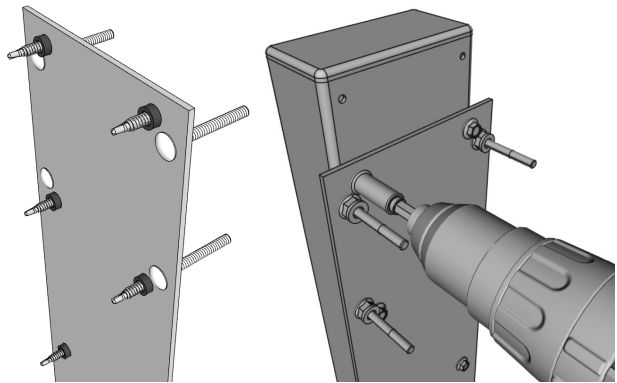
There are 8 mounting points visible on both sides of the pole on the paint surface. The picture opposite shows the mounting points for the Lumina chargers.



Place the self-tapping screws in the mounting plate and place the spacer sleeves over them.

Screw the mounting plate to the pole with a screwdriver using self-tapping screws.

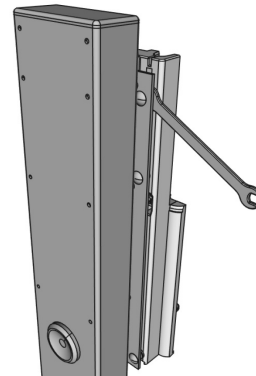
The spacers are to go between the plate and the pole.



Place the charger's dedicated mounting holes on the lock screws.

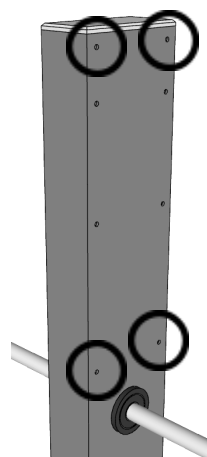
Tighten the flange nuts to the intermediate plate using an 8 mm wrench.

Fix the charger to the post using M5 washers and self-locking nuts.



## Stilo

There are 8 mounting points visible on both sides of the pole on the paint surface.  
Use the points marked in the picture opposite to mount the Stilo charger.



Screw the Stilo charger mount to the pole with a screwdriver using the self-tapping screws included in the set.

Fix the charger to the pole by following the charger's instructions.

