

# INSTALLATION INSTRUCTIONS

## 120 CM STRAIGHT POST

FOR ENELION LUMINA CHARGING STATION

### TOOLS REQUIRED TO ASSEMBLE THE CHARGING STATION:

- electric screwdriver,
- 8 mm socket spanner for screwdriver with extension.

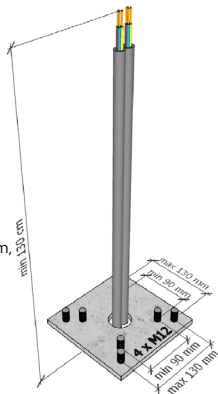
### THE SET INCLUDES

- 120 cm high black post – 1 pc,
- self-tapping screws 4.8 x 19 mm – 12 pcs,
- plug for  $\varnothing 40$  mm hole – 2 pcs.

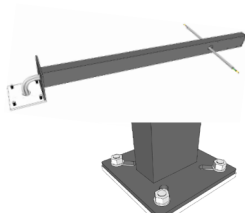
### REQUIREMENTS FOR THE INSTALLATION AREA:

- minimum dimensions of stable ground surface – 20 x 20 cm,
- maximum distance between mounting pins – 13 x 13 cm,
- minimum distance between mounting pins – 9 x 9 cm,
- minimum length of power cables – 130 cm,
- minimalna długość przewodów zasilających – 130 cm.

The post can be mounted by screwing it to a ready-made Enelion prefabricated element, to a mounting base prepared from the Enelion foundation kit or directly to a solid, robust ground surface using suitably strong mounting bolts.

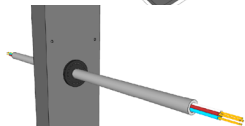


Place the post close to the installation area in a horizontal position. Run the power cables through the post from the base to  $\varnothing 40$  mm holes in the top part of the post.



Screw the post to the ground.

Cut holes in  $\varnothing 40$  mm plugs that are 5 mm smaller in diameter than the dimension of the power cable. Put the plugs on the power cables. Insert the plugs into the holes of the post.



There are 6 visible mounting points on the painted surface on both sides of the post. Screw the backplate of the Lumina charging station to the post with an electric screwdriver, using the self-tapping screws provided.

Follow the operating instructions of the charging station during its installation.

