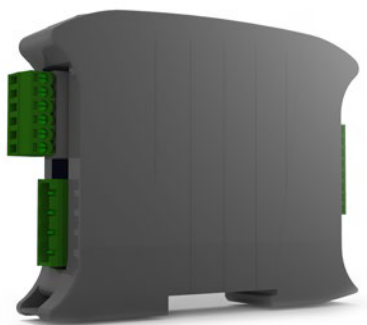
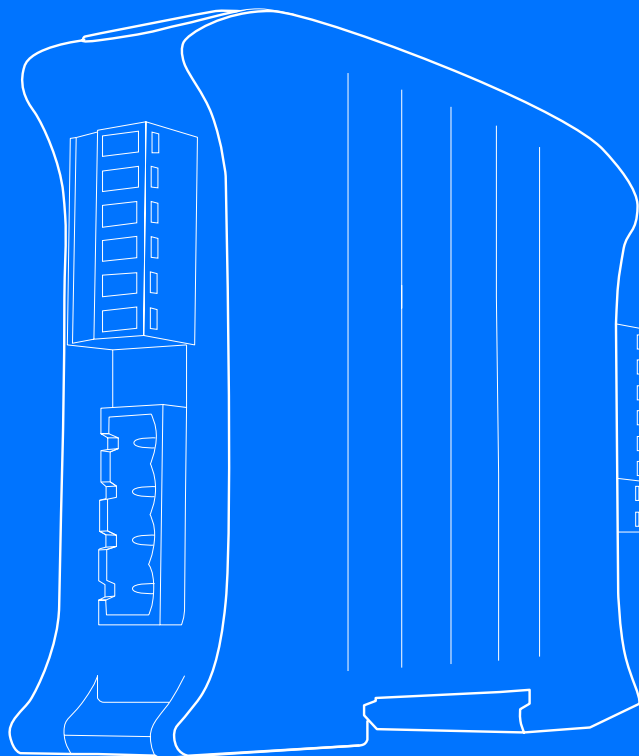


enelion Energy Guard

The intelligent guardian of your connection

Enelion Energy Guard - is a device that monitors the energy consumption of the whole building - from a single household to the largest office parks. Based on the power ordered from the energy supplier and the current consumption measured by Energy Guard, it is possible to obtain information on how much power can be directed for EV charging. Energy Guard can also be used in the chain of charging stations (car parks, shopping centres, fleet parking lots), which allows using the full potential of the current supplied energy. Current measurement is performed with the use of measuring coils, which makes the installation process simpler.



USAGE

- Extension of DLB functionality*
- Building power monitoring
- The intelligent charger stations power matching to the current power consumption
- Overload protection
- Dynamic reaction on the emerging power load
- Dynamic reaction on the emerging power load

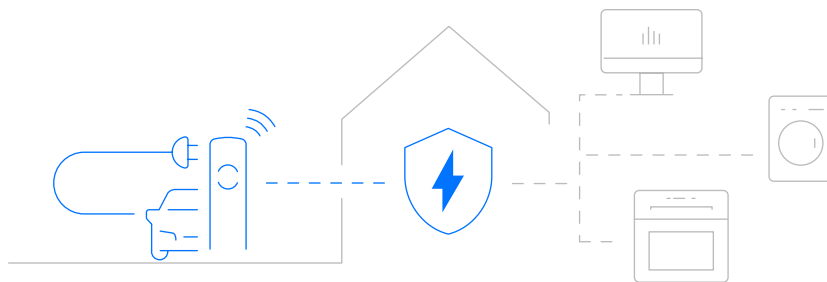
*Dynamic Load Balancing in the chain (DLB)

The whole power for charging stations is divided by each charging station in the chain

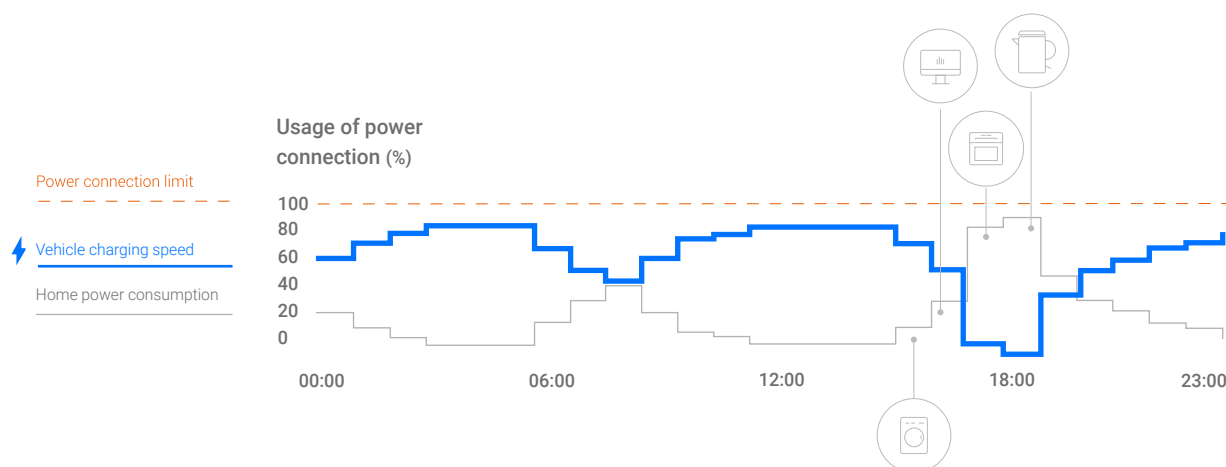
CONFIGURATION:

- The measurement of the whole power network together with charging stations.
- The measurement of the whole power network without charging stations.

More detailed information included in the manual



enelion Energy Guard application



enelion Energy Guard

TECHNICAL SPECIFICATION



Housing	Plastic PC/ABS, DIN rail montage
IP protection	assembly inside the switchgear
User interface	LED indicators
Maximum number of charging stations	up to 90 pcs; in the case of custom-made coils - determined individually
Rated operational voltage	3 x 230 V AC ($\pm 10\%$) lub 1 x 230 V AC ($\pm 10\%$)
Network frequency	50 Hz
Measuring points parameters	3 or 1-phase system (the right amount of measuring coils in the set of EEG)
Measurement range	depending on measuring coils
Bidirectional current measurement	Yes
Operating temperature	-25°C / + 55°C
Storage temperature	-35°C / + 55°C
Maximum highest above sea level	2000 m
Connection to charging stations - Enelion Chain	Enelion Chain
Height (mm)	105
Width (mm)	20
Depth (mm)	80

rev. 06, 01.04.2023